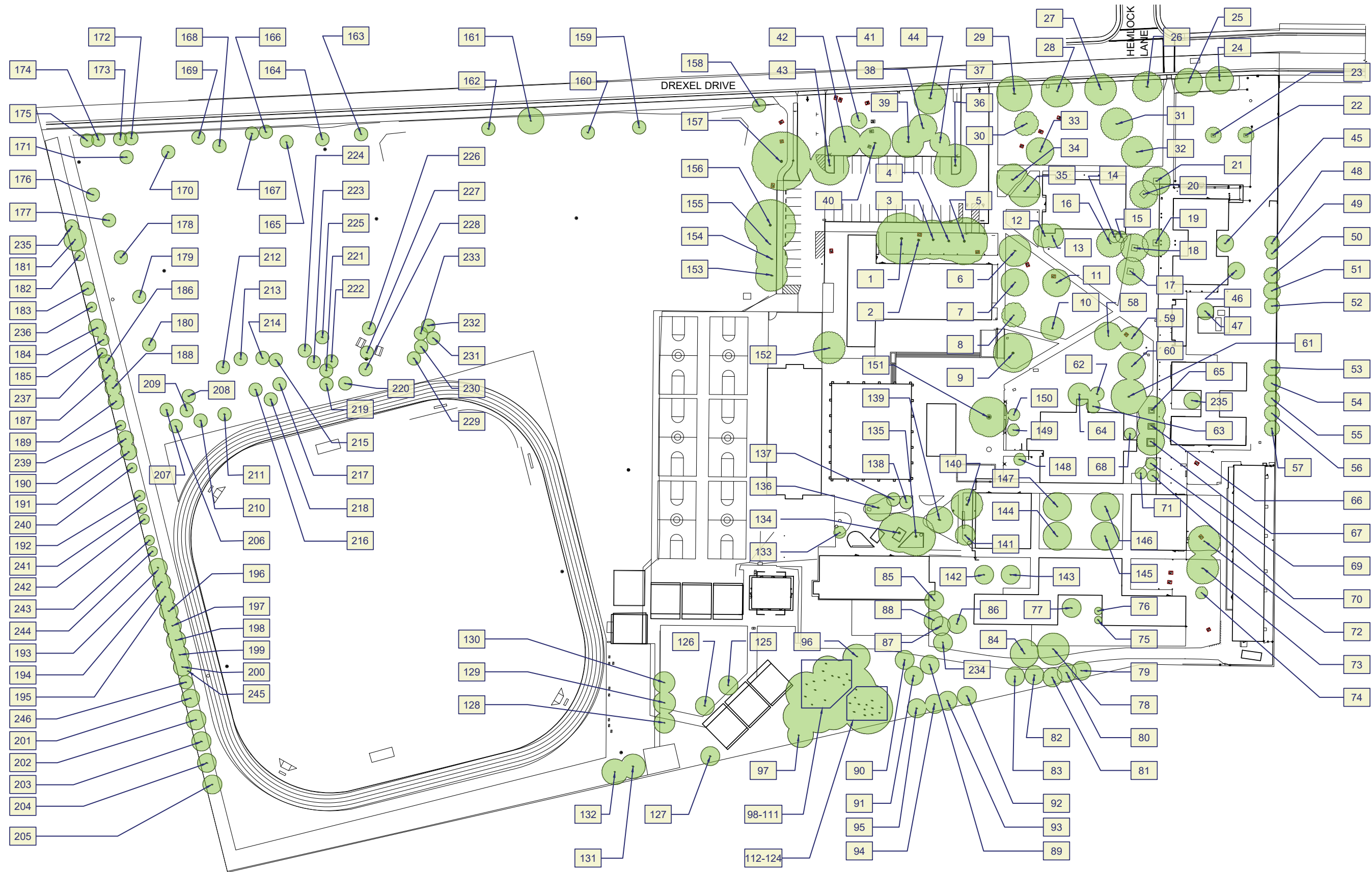


Oliver Wendell Holmes Jr High
1220 Drexel Dr, Davis, CA 95616



Tree Data

ID	Tree species - Common Name	Botanical Name	Deciduous/ Evergreen	Approx. Height Range (ft)	Approx. Canopy Width (ft)	Trunk Size DBH (in)	Observable Health Condition	Notes
OWH-1	Pine	Pinus	Evergreen	70	29	29	No observable problems	
OWH-2	Pine	Pinus	Evergreen	70	29	23	No observable problems	
OWH-3	Pine	Pinus	Evergreen	70	23	22	No observable problems	
OWH-4	Pine	Pinus	Evergreen	52	21	21	Surface roots	
OWH-5	Pine	Pinus	Evergreen	65	36	27	No observable problems	
OWH-6	Ornamental Pear	Pyrus calleryana	Deciduous	36	23	12	No observable problems	
OWH-7	Ornamental Pear	Pyrus calleryana	Deciduous	21	10	6	Surface roots	
OWH-8	Chinese Elm	Ulmus parvifolia	Deciduous	39	29	8	No observable problems	
OWH-9	Chinese Elm	Ulmus parvifolia	Deciduous	49	42	21	Broken branch needs to be removed from canopy	
OWH-10	Ash	Fraxinus	Deciduous	36	29	14	Surface roots, buttress roots	
OWH-11	Chinese Elm	Ulmus parvifolia	Deciduous	39	39	10	No observable problems	
OWH-12	Hollywood Juniper	Juniperus chinensis	Evergreen	26	13	7	No observable problems	Multi
OWH-13	Hollywood Juniper	Juniperus chinensis	Evergreen	26	23	9	No observable problems	Multi
OWH-14	Hollywood Juniper	Juniperus chinensis	Evergreen	23	14	4	No observable problems	Multi
OWH-15	Hollywood Juniper	Juniperus chinensis	Evergreen	26	16	4	No observable problems	Multi
OWH-16	Ash	Fraxinus	Deciduous	33	22	23	Declining health, suckering along main branches	Arborist review
OWH-17	Ash	Fraxinus	Deciduous	36	18	17	Declining health, dead limbs need to be removed from canopy	Arborist review, memorial plaque in memory of Dean Clark
OWH-18	Ash	Fraxinus	Deciduous	44	26	17	Declining health	Arborist review
OWH-19	Ash	Fraxinus	Deciduous	49	29	21	Declining health, prune deceased limbs from tree	Arborist review, bench around tree
OWH-20	Red Maple	Acer rubrum	Deciduous	23	21	9	Dying canopy, remove dead limbs	Arborist review
OWH-21	Red Maple	Acer rubrum	Deciduous	34	21	9	Remove dead limbs from canopy	
OWH-22	Sawleaf Zelkova	Zelkova serrata	Deciduous	16	8	3	No observable problems	
OWH-23	Sawleaf Zelkova	Zelkova serrata	Deciduous	16	9	2	No observable problems	
OWH-24	London Plane	Platanus x acerifolia	Deciduous	36	31	11	Surface roots	
OWH-25	London Plane	Platanus x acerifolia	Deciduous	42	31	13	Surface roots	
OWH-26	London Plane	Platanus x acerifolia	Deciduous	34	23	10	Surface roots	
OWH-27	London Plane	Platanus x acerifolia	Deciduous	25	18	7	Surface roots	
OWH-28	London Plane	Platanus x acerifolia	Deciduous	36	29	10	Surface roots	
OWH-29	London Plane	Platanus x acerifolia	Deciduous	44	31	13	Surface roots	
OWH-30	Valley Oak	Quercus lobata	Deciduous	42	26	12	Surface roots	
OWH-31	Honey Locust	Gleditsia triacanthos	Deciduous	27	39	12	Surface roots, large limbs in canopy dying. Prune dead branches	Arborist review
OWH-32	Valley Oak	Quercus lobata	Deciduous	36	31	12	Surface roots	
OWH-33	Valley Oak	Quercus lobata	Deciduous	52	31	16	Surface roots	
OWH-34	Chinese Pistache	Pistacia chinensis	Deciduous	31	23	16	Fruit panicles	
OWH-35	Chinese Pistache	Pistacia chinensis	Deciduous	26	21	10	Thinning canopy, prune dead branches	

Data Collection - Oliver Wendell Holmes Jr High - Tree Data

OWH-36	Honey Locust	Gleditsia triacanthos	Deciduous	42	36	20	No observable problems	
OWH-37	Honey Locust	Gleditsia triacanthos	Deciduous	21	16	6	Surface roots, thinning canopy	
OWH-38	Honey Locust	Gleditsia triacanthos	Deciduous	22	16	9	Thinning canopy	
OWH-39	Chinese Hackberry	Celtis sinensis	Deciduous	49	29	16	Surface roots	
OWH-40	Chinese Hackberry	Celtis sinensis	Deciduous	44	31	15	Surface roots	
OWH-41	Valley Oak	Quercus lobata	Deciduous	44	29	10	No observable problems	
OWH-42	Honey Locust	Gleditsia triacanthos	Deciduous	36	34	12	Surface roots	
OWH-43	Honey Locust	Gleditsia triacanthos	Deciduous	49	29	18	Mistletoe	
OWH-44	London Plane	Platanus x acerifolia	Deciduous	42	31	13	Surface roots	
OWH-45	Raywood Ash	Fraxinus oxycarpa 'Raywood'	Deciduous	39	29	20	Thinning canopy	Arborist review
OWH-46	Chinese Hackberry	Celtis sinensis	Deciduous	27	20	10	Large trunk wound that is healing	
OWH-47	Chinese Hackberry	Celtis sinensis	Deciduous	26	21	10	No observable problems	
OWH-48	Interior Live Oak	Quercus wislizenii	Evergreen	29	13	9	No observable problems	
OWH-49	Sweet Bay	Laurus nobilis	Evergreen	26	12	6	Bark sloughing from trunk with dead wood underneath	Multi
OWH-50	Bronze Loquat	Eriobotrya japonica	Evergreen	14	14	4	Poor shape, but not near kids so it can stay	
OWH-51	Interior Live Oak	Quercus wislizenii	Evergreen	7	4	2	Pruned as shrub	Multi
OWH-52	Olive	Olea europea	Evergreen	23	10	6	No observable problems	
OWH-53	Bronze Loquat	Eriobotrya japonica	Evergreen	9	8	4	Very poor shape	Multi
OWH-54	Bronze Loquat	Eriobotrya japonica	Evergreen	13	11	4	Poor shape, but not near kids so it can stay	Multi
OWH-55	Bronze Loquat	Eriobotrya japonica	Evergreen	13	8	2	Poor shape, but not near kids so it can stay	Multi
OWH-56	Bronze Loquat	Eriobotrya japonica	Evergreen	13	14	4	Poor shape, but not near kids so it can stay	Multi
OWH-57	Bronze Loquat	Eriobotrya japonica	Evergreen	10	8	4	Poor shape, but not near kids so it can stay for no	Multi
OWH-58	Chinese Elm	Ulmus parvifolia	Deciduous	39	39	10	Surface roots	
OWH-59	Red Maple	Acer rubrum	Deciduous	34	18	7	Surface roots	
OWH-60	Red Maple	Acer rubrum	Deciduous	29	18	7	Surface roots, large trunk wound with dead wood underneath	Arborist review
OWH-61	Dawn Redwood	Metasequoia glyptostroboides	Deciduous	49	26	18	Buttress and surface roots	
OWH-62	Magnolia	Magnolia	Evergreen	13	10	2	No observable problems	Multi; Memorial plaque, in memory of Lee Watkins
OWH-63	Pine	Pinus	Evergreen	34	21	16	No observable problems	
OWH-64	Chinese Elm	Ulmus parvifolia	Deciduous	36	39	9	Remove dead limbs from canopy	multi
OWH-65	Dawn Redwood	Metasequoia glyptostroboides	Deciduous	29	34	13	No observable problems	
OWH-66	Dawn Redwood	Metasequoia glyptostroboides	Deciduous	42	14	11	No observable problems	
OWH-67	Dawn Redwood	Metasequoia glyptostroboides	Deciduous	42	22	14	No observable problems	
OWH-68	California Fan Palm	Washingtonia filifera	Evergreen	40	8	20	No observable problems	
OWH-69	Crape Myrtle	Lagerstroemia indica	Deciduous	21	17	3	No observable problems	multi
OWH-70	Eastern Redbud	Cercis occidentalis	Deciduous	11	5	2	Defoliating canopy	multi
OWH-71	Xylosma	Xylosma congestum	Evergreen	20	13	4	No observable problems	multi
OWH-72	Chinese Hackberry	Celtis sinensis	Deciduous	26	13	10	Surface root, dead limbs in canopy	Arborist review
OWH-73	Chinese Hackberry	Celtis sinensis	Deciduous	31	21	13	Surface roots	
OWH-74	Chinese Hackberry	Celtis sinensis	Deciduous	18	7	4	Declining health, wound at base of tree	

OWH-75	Lemon	Citrus	Evergreen	18	16	3	No observable problems	multi
OWH-76	Orange	Citrus	Evergreen	7	5	1	No observable problems	
OWH-77	Black Walnut	Junglans nigra	Deciduous	36	31	16	Mistletoe, prune dead branches from tree	multi
OWH-78	Deador Cedar	Cedrus deadora	Evergreen	52	31	23	No observable problems	
OWH-79	Pine	Pinus	Evergreen	62	26	33	Ivy climbing trunk	Remove ivy
OWH-80	Pine	Pinus	Evergreen	39	26	19	Tree pruned to avoid power lines, ivy climbing trunk	Remove ivy
OWH-81	Pine	Pinus	Evergreen	N/A	N/A	10	Completely dead, fallen on fence and power lines	Remove tree. Canopy is tangled in power lines
OWH-82	Deador Cedar	Cedrus deadora	Evergreen	42	18	15	No observable problems	
OWH-83	Deador Cedar	Cedrus deadora	Evergreen	39	23	16	Top of tree has died	Arborist review for dead top of tree
OWH-84	Deador Cedar	Cedrus deadora	Evergreen	57	26	16	No observable problems	
OWH-85	Mexican Fan Palm	Washingtonia robusta	Evergreen	68	8	18	Ivy growing up trunk	
OWH-86	Elm	Fraxinus	Deciduous	52	42	19	Failing canopy, mistletoe	
OWH-87	Purple leaf plum	Prunus cerasifera 'Atropurpurea'	Deciduous	11	8	1	Ivy growing in canopy	multi
OWH-88	Valley Oak	Quercus lobata	Deciduous	36	10	6	No observable problems	
OWH-89	Redwood	Sequoia sempervirens	Evergreen	57	26	16	No observable problems	multi
OWH-90	Redwood	Sequoia sempervirens	Evergreen	52	18	14	No observable problems	
OWH-91	Redwood	Sequoia sempervirens	Evergreen	49	16	14	Dead branches in lower canopy need removing	
OWH-92	Redwood	Sequoia sempervirens	Evergreen	39	23	18	Missing top of tree, branches pruned to avoid power lines, suckering at base	
OWH-93	Redwood	Sequoia sempervirens	Evergreen	57	21	22	Pruned to avoid power lines	
OWH-94	Pine	Pinus	Evergreen	62	36	29	Top of tree pruned to avoid power lines, large side branch has created new canopy	
OWH-95	Pine	Pinus	Evergreen	23	20	14	Top of tree pruned to avoid power lines	
OWH-96	Almond	Prunus dulcis	Deciduous	26	16	9	Prune dead branches	
OWH-97	Pine	Pinus	Evergreen	57	57	35	No observable problems	
OWH-98	Pine	Pinus	Evergreen	39	26	28	No observable problems	
OWH-99	Pine	Pinus	Evergreen	39	16	22	No observable problems	
OWH-100	Pine	Pinus	Evergreen	39	13	20	No observable problems	
OWH-101	Pine	Pinus	Evergreen	18	26	13	No observable problems	
OWH-102	Pine	Pinus	Evergreen	39	23	26	No observable problems	
OWH-103	Pine	Pinus	Evergreen	23	13	13	No observable problems	
OWH-104	Pine	Pinus	Evergreen	39	8	9	No observable problems	
OWH-105	Pine	Pinus	Evergreen	14	5	4	Very few needles in canopy, appears to be dying	
OWH-106	Pine	Pinus	Evergreen	73	26	24	No observable problems	
OWH-107	Pine	Pinus	Evergreen	73	26	19	No observable problems	
OWH-108	Pine	Pinus	Evergreen	39	10	7	No observable problems	
OWH-109	Pine	Pinus	Evergreen	73	26	18	No observable problems	
OWH-110	Pine	Pinus	Evergreen	39	8	12	No observable problems	
OWH-111	Pine	Pinus	Evergreen	73	23	17	No observable problems	
OWH-112	Pine	Pinus	Evergreen	73	34	35	No observable problems	
OWH-113	Pine	Pinus	Evergreen	N/A	None	26	Top of tree has been cut off	

Data Collection - Oliver Wendell Holmes Jr High - Tree Data

OWH-114	Pine	Pinus	Evergreen	N/A	16	16	Top of tree has been cut off	
OWH-115	Pine	Pinus	Evergreen	N/A	None	25	Top of tree has been cut off	
OWH-116	Pine	Pinus	Evergreen	73	18	25	No observable problems	
OWH-117	Pine	Pinus	Evergreen	39	13	12	No observable problems	
OWH-118	Pine	Pinus	Evergreen	26	10	7	Very few needles in canopy, appears to be dying	
OWH-119	Pine	Pinus	Evergreen	73	29	21	No observable problems	
OWH-120	Pine	Pinus	Evergreen	34	10	11	No observable problems	
OWH-121	Pine	Pinus	Evergreen	31	5	7	No observable problems	
OWH-122	Pine	Pinus	Evergreen	73	21	25	No observable problems	
OWH-123	Pine	Pinus	Evergreen	73	34	31	No observable problems	
OWH-124	Pine	Pinus	Evergreen	47	31	20	No observable problems	
OWH-125	Chinese Pistache	Pistacia chinensis	Deciduous	31	26	10	No observable problems	
OWH-126	Chinese Pistache	Pistacia chinensis	Deciduous	26	21	7	No observable problems	
OWH-127	Cork Oak	Quercus suber	Evergreen	21	7	4	No observable problems	multi
OWH-128	Fruitless Mulberry	Morus alba 'fruitless'	Deciduous	39	31	17	No observable problems	
OWH-129	Fruitless Mulberry	Morus alba 'fruitless'	Deciduous	39	47	20	No observable problems	
OWH-130	Chinese Pistache	Pistacia chinensis	Deciduous	29	23	9	No observable problems	
OWH-131	Pine	Pinus	Evergreen	57	29	23	No observable problems	
OWH-132	Italian Stone Pine	Pinus pinea	Evergreen	70	81	46	No observable problems	
OWH-133	Crape Myrtle	Lagerstroemia indica	Deciduous	11	12	2	Powdery mildew	multi
OWH-134	Pine	Pinus	Evergreen	75	31	30	No observable problems	
OWH-135	Deador Cedar	Cedrus deodora	Evergreen	47	23	18	Canopy appears to be thin	
OWH-136	Pine	Pinus	Evergreen	78	34	23	No observable problems	
OWH-137	Deador Cedar	Cedrus deodora	Evergreen	47	29	14	No observable problems	
OWH-138	Deador Cedar	Cedrus deodora	Evergreen	36	18	10	No observable problems	
OWH-139	Deador Cedar	Cedrus deodora	Evergreen	42	21	11	No observable problems	
OWH-140	Interior Live Oak	Quercus wislizenii	Evergreen	47	34	17	Surface roots	
OWH-141	Interior Live Oak	Quercus wislizenii	Evergreen	42	26	16	No observable problems	
OWH-142	Honey Locust	Gleditsia triacanthos	Deciduous	29	21	8	No observable problems	
OWH-143	Honey Locust	Gleditsia triacanthos	Deciduous	29	29	10	Surface roots	
OWH-144	Fruitless Mulberry	Morus alba 'fruitless'	Deciduous	42	39	19	Surface roots, buttress roots	
OWH-145	Purple leaf plum	Prunus cerasifera 'Atropurpurea'	Deciduous	26	21	10	Surface roots, suckering at base	
OWH-146	London Plane	Platanus x acerifolia	Deciduous	39	29	11	Surface roots	
OWH-147	Fruitless Mulberry	Morus alba 'fruitless'	Deciduous	42	34	18	Surface roots	
OWH-148	European White Birch	Betula pendula	Deciduous	26	12	8	No observable problems	
OWH-149	Ornamental Pear	Pyrus calleryana	Deciduous	21	13	6	Base of tree completely rotted	Recommend for removal
OWH-150	Ornamental Pear	Pyrus calleryana	Deciduous	21	12	5	Surface roots	
OWH-151	Pine	Pinus	Evergreen	57	34	31	Large limb recently broke off canopy of tree, lifting adjacent pavement	
OWH-152	Valley Oak	Quercus lobata	Deciduous	42	31	14	No observable problems	
OWH-153	Green Ash	Fraxinus pennsylvanica	Deciduous	39	26	25	Surface roots, mistletoe, prune dead branches from canopy	

OWH-154	Green Ash	Fraxinus pennsylvanica	Deciduous	34	18	13	Mistletoe	
OWH-155	Chinese Hackberry	Celtis sinensis	Deciduous	29	16	8	No observable problems	
OWH-156	Green Ash	Fraxinus pennsylvanica	Deciduous	44	29	25	Mistletoe	
OWH-157	Green Ash	Fraxinus pennsylvanica	Deciduous	57	49	31	Multiple dead limbs in canopy need removal, surface roots, mistletoe	Arborist review
OWH-158	Sweet Bay	Laurus nobilis	Evergreen	34	34	4	Multistem, many stems dead or dying	multi
OWH-159	London Plane	Platanus x acerifolia	Deciduous	31	16	8	No observable problems	
OWH-160	London Plane	Platanus x acerifolia	Deciduous	21	10	5	No observable problems	
OWH-161	Pine	Pinus	Evergreen	65	29	22	No observable problems	
OWH-162	London Plane	Platanus x acerifolia	Deciduous	26	17	8	Ends of limbs dying in some areas of canopy	
OWH-163	London Plane	Platanus x acerifolia	Deciduous	26	21	9	No observable problems	
OWH-164	London Plane	Platanus x acerifolia	Deciduous	29	29	12	Surface roots, crossing branches in canopy could use pruning	
OWH-165	Valley Oak	Quercus lobata	Deciduous	39	18	10	Damage at base of trunk	
OWH-166	Cypress	Cupressus	Evergreen	33	13	15	Heavy canopy pruning has occurred	
OWH-167	Cypress	Cupressus	Evergreen	43	23	18	Top of tree appears to have pruned	
OWH-168	Valley Oak	Quercus lobata	Deciduous	36	29	12	Surface roots	
OWH-169	Cypress	Cupressus	Evergreen	46	29	20	Surface roots	
OWH-170	Valley Oak	Quercus lobata	Deciduous	36	21	9	Surface roots, damage at base that has healed	
OWH-171	Valley Oak	Quercus lobata	Deciduous	23	12	5	Bark damage at base that is healing	
OWH-172	Cypress	Cupressus	Evergreen	31	16	10	Defoliating, bark sloughing, appears to be dying.	
OWH-173	Cypress	Cupressus	Evergreen	39	18	15	No observable problems	
OWH-174	Cypress	Cupressus	Evergreen	39	13	14	No observable problems	
OWH-175	Cypress	Cupressus	Evergreen	49	21	18	Broken branches in canopy need pruning	
OWH-176	Chinese Tallow	Sapium sebiferum	Deciduous	29	26	12	Dead limbs in canopy	
OWH-177	Valley Oak	Quercus lobata	Deciduous	21	21	8	No observable problems	
OWH-178	Chinese Tallow	Sapium sebiferum	Deciduous	34	26	16	Surface roots	
OWH-179	Valley Oak	Quercus lobata	Deciduous	34	29	11	No observable problems	
OWH-180	Valley Oak	Quercus lobata	Deciduous	42	29	11	No observable problems	
OWH-181	Cypress	Cupressus	Evergreen	55	21	18	No observable problems	
OWH-182	Holly Oak	Quercus ilex	Evergreen	34	29	3	Multistem shrub/tree	multi
OWH-183	Cypress	Cupressus	Evergreen	39	23	20	Dead branches need pruning out of canopy, holly oak volunteers need to be removed at base	
OWH-184	Cypress	Cupressus	Evergreen	44	26	16	No observable problems	
OWH-185	Cherry	Prunus	Deciduous	25	13	2	No observable problems	multi
OWH-186	Cypress	Cupressus	Evergreen	44	18	17	Canopy appears to be dying	Arborist review
OWH-187	Cypress	Cupressus	Evergreen	49	18	16	Much of canopy appears unhealthy	Arborist review
OWH-188	Cypress	Cupressus	Evergreen	49	13	14	No observable problems	
OWH-189	Cypress	Cupressus	Evergreen	49	21	18	No observable problems	
OWH-190	Cypress	Cupressus	Evergreen	49	13	12	No observable problems	
OWH-191	Cypress	Cupressus	Evergreen	54	49	17	No observable problems	
OWH-192	Valley Oak	Quercus lobata	Deciduous	14	10	2	Suckering at base	multi

Data Collection - Oliver Wendell Holmes Jr High - Tree Data

OWH-193	Cypress	Cupressus	Evergreen	39	10	18	Dead limbs on canopy, tree appears to be dying	
OWH-194	Holly Oak	Quercus ilex	Evergreen	39	10	4	No observable problems	multi
OWH-195	Holly Oak	Quercus ilex	Evergreen	39	13	4	No observable problems	multi
OWH-196	Cypress	Cupressus	Evergreen	51	29	21	No observable problems	
OWH-197	Valley Oak	Quercus lobata	Deciduous	48	21	12	No observable problems	
OWH-198	Holly Oak	Quercus ilex	Evergreen	17	13	5	No observable problems	
OWH-199	Cypress	Cupressus	Evergreen	47	13	13	No observable problems	Multi
OWH-200	Cypress	Cupressus	Evergreen	38	16	20	No observable problems	
OWH-201	Valley Oak	Quercus lobata	Deciduous	38	23	16	No observable problems	
OWH-202	Cypress	Cupressus	Evergreen	57	18	16	No observable problems	
OWH-203	Valley Oak	Quercus lobata	Deciduous	44	21	13	No observable problems	
OWH-204	Coast Live Oak	Quercus agrifolia	Evergreen	23	12	8	No observable problems	
OWH-205	Cypress	Cupressus	Evergreen	47	18	11	No observable problems	
OWH-206	Redwood	Sequoia sempervirens	Evergreen	33	18	12	No observable problems	
OWH-207	Redwood	Sequoia sempervirens	Evergreen	47	21	17	No observable problems	
OWH-208	Redwood	Sequoia sempervirens	Evergreen	42	17	13	Thinning canopy, surface roots	
OWH-209	Redwood	Sequoia sempervirens	Evergreen	47	18	16	Surface roots	
OWH-210	Redwood	Sequoia sempervirens	Evergreen	47	17	13	Thinning canopy	
OWH-211	Redwood	Sequoia sempervirens	Evergreen	47	21	18	Surface roots	
OWH-212	Redwood	Sequoia sempervirens	Evergreen	49	23	17	Thinning canopy	
OWH-213	Redwood	Sequoia sempervirens	Evergreen	47	18	16	Thinning canopy	
OWH-214	Redwood	Sequoia sempervirens	Evergreen	47	18	18	No observable problems	
OWH-215	Redwood	Sequoia sempervirens	Evergreen	49	21	19	No observable problems	
OWH-216	Redwood	Sequoia sempervirens	Evergreen	44	16	14	Thinning canopy	
OWH-217	Redwood	Sequoia sempervirens	Evergreen	44	16	14	Thinning canopy	
OWH-218	Redwood	Sequoia sempervirens	Evergreen	46	18	18	No observable problems	
OWH-219	Redwood	Sequoia sempervirens	Evergreen	47	21	18	Thinning canopy	
OWH-220	Redwood	Sequoia sempervirens	Evergreen	51	21	20	No observable problems	
OWH-221	Redwood	Sequoia sempervirens	Evergreen	46	0	14	Dead	Needs removal
OWH-222	Redwood	Sequoia sempervirens	Evergreen	42	16	12	Thinning canopy	
OWH-223	Redwood	Sequoia sempervirens	Evergreen	47	18	15	Thinning canopy	
OWH-224	Redwood	Sequoia sempervirens	Evergreen	47	21	18	No observable problems	
OWH-225	Redwood	Sequoia sempervirens	Evergreen	47	21	20	No observable problems	
OWH-226	Redwood	Sequoia sempervirens	Evergreen	39	18	13	Nearly dead	
OWH-227	Redwood	Sequoia sempervirens	Evergreen	48	21	22	No observable problems	Memorial plaque for Andrew Mockus
OWH-228	Redwood	Sequoia sempervirens	Evergreen	29	16	11	Suckering at base	
OWH-229	Redwood	Sequoia sempervirens	Evergreen	36	18	15	Suckering at base	
OWH-230	Redwood	Sequoia sempervirens	Evergreen	25	13	10	Suckering at base	
OWH-231	Redwood	Sequoia sempervirens	Evergreen	18	10	7	Suckering at base	
OWH-232	Redwood	Sequoia sempervirens	Evergreen	29	10	12	No observable problems	

OWH-233	Redwood	<i>Sequoia sempervirens</i>	Evergreen	21	8	6	Thinning canopy, bark missing along length of trunk on northwest side	
OWH-234	Cork Oak	<i>Quercus suber</i>	Evergreen	55	42	25	Lifting adjacent asphalt	
OWH-235	Western Redbud	<i>Cercis candensis</i>	Deciduous	18	8	3	No observable problems	multi
OWH-236	Western Redbud	<i>Cercis candensis</i>	Deciduous	14	8	3	No observable problems	
OWH-237	Western Redbud	<i>Cercis candensis</i>	Deciduous	18	11	2	Crossing trunks at base	Multi
OWH-238	Western Redbud	<i>Cercis candensis</i>	Deciduous	12	11	3	No observable problems	Multi
OWH-239	Coast Live Oak	<i>Quercus agrifolia</i>	Evergreen	6	4	1	Significant damage to trunk	Multi, should be removed
OWH-240	Western Redbud	<i>Cercis candensis</i>	Deciduous	9	8	1	No observable problems	Multi
OWH-241	Elm	<i>Ulmus</i>	Deciduous	14	6	1	No observable problems	Multi, one trunk should be removed
OWH-242	Western Redbud	<i>Cercis candensis</i>	Deciduous	14	11	3	Close to fence, crossing branches	multi
OWH-243	Western Redbud	<i>Cercis candensis</i>	Deciduous	14	14	3	Close to fence, crossing branches	multi
OWH-244	Valley Oak	<i>Quercus lobata</i>	Deciduous	10	6	1	Suckers have been recently cut at base	
OWH-245	Western Redbud	<i>Cercis candensis</i>	Deciduous	14	17	4	Leaning, other stems have been removed, left one stem hanging over fence	Multi
OWH-246	Plum	<i>Prunus</i>	Deciduous	12	14	4	No observable problems	Multi